

SV80 Series

Diverter Valve



Nuffield Road,
St. Ives, Cambs.,
PE27 3LZ, UK

Tel: +44(0)1480 397400

Fax: +44(0)1480 466555

www.webtec.co.uk

E-mail: sales@webtec.co.uk

A **Diverter Valve** provides an alternative to the standard directional control valve when a neutral (centre) position is not required. It allows flow to be directed into either of two lines which enables fast changing from one system to another, or from one system to tank thus providing an idling circuit.

Other applications may be as a safety lock preventing accidental operation of separate functions which should not operate together and the selection of attachments as on a farm tractor.

Specifications

Maximum Working Pressure:

210 bar

Maximum Flow:

80 lpm

Porting:

See Table 2, ordering codes

Material:

Stainless steel spool in cast iron body

Weight:

2 kg (approx.)

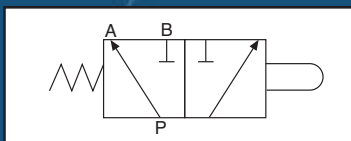
Mounting:

Two bolt

Symbol

For valve model number SV80-A-J-S (see ordering codes)

Symbol



Features

- Flow may be directed by mechanically pushing the spool with spring offset or by a mechanical push pull operation in which case the valve stem is threaded or fitted with a moulded knob.
- Customer can select from one of two spool types allowing flow to be diverted from one line to another or from system to tank.
- A choice of port threads are available.
- Special versions also available.

Manufacturers of hydraulic components and test equipment
for the Mobile, Industrial and Agricultural industries



SV80-BU-ENG-2541.pdf
(Issue 1)

05/10

Ordering Codes

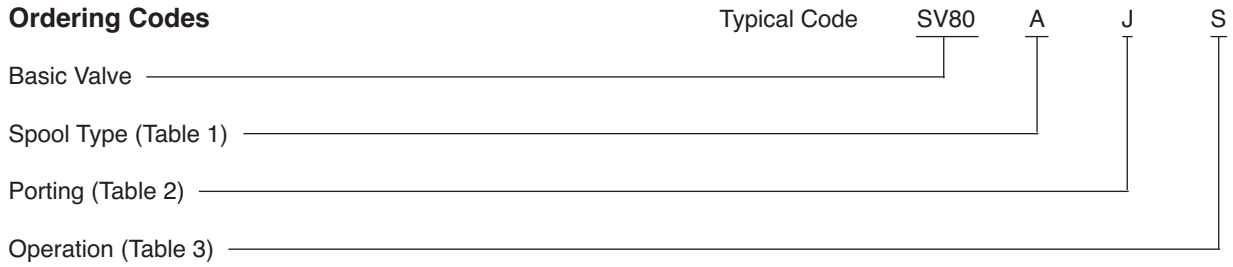


Table 1: Spool Type

Code	Spool Type
A	
B	

Table 2: Porting

Code	Porting
J	1/2" BSPP
G	7/8" -14UN #10 SAE ORB
M	M22 x 1.5
A	1/2" NPTF

Table 3: Operation

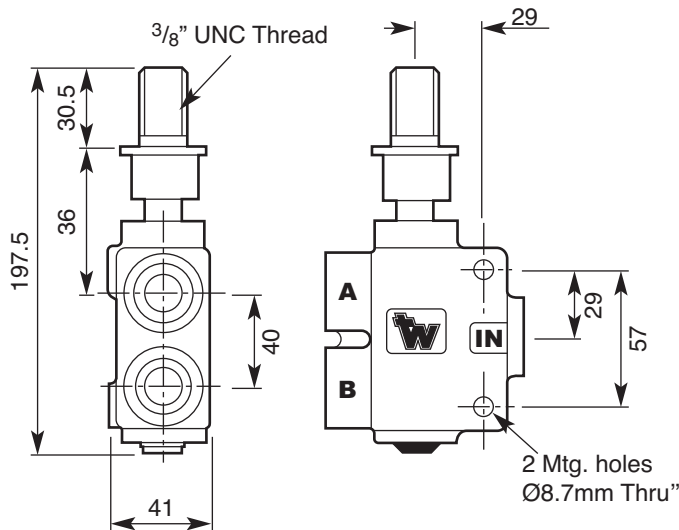
Code	Operation
S	Spring Offset, Mechanical Push
M	Manual, Push - Pull
T	Threaded, Push - Pull

Installation Details

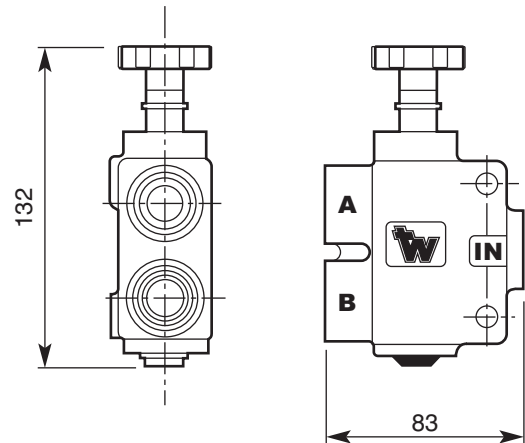
Dimensions in millimetres

'A' Spool - Inlet to Port 'A' in position shown below
 'B' Spool - All Ports closed in position shown below

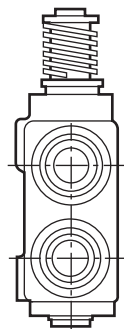
Threaded Push, Pull Type



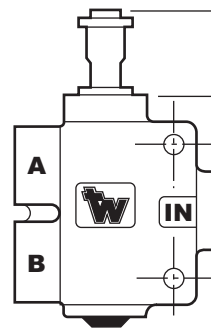
Manual Push, Pull Type



Spool Movement 11 mm



Spring Offset Type



APPROVED