



WEBTEC

WEBTEC PRODUCTS LIMITED

C2000

Hydraulic data acquisition system

**Modular
8-64
inputs**

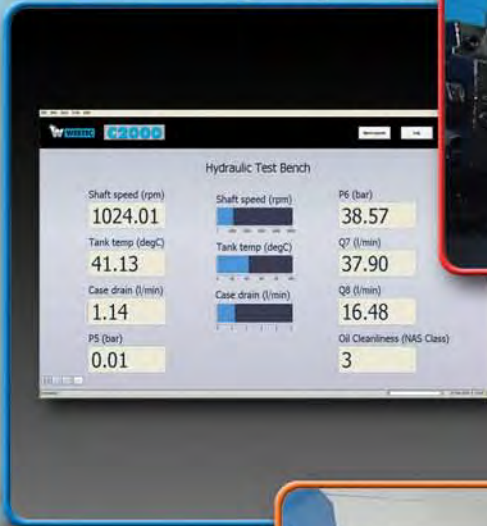
**Windows™
compatible
Software**

**Hydraulic
test
solution**

**Print test
Certificates**

**TCP/IP
network
ready**

**Dedicated
high-speed
controller**



Manufacturers of hydraulic components and test equipment for the Mobile, Industrial and Agricultural industries



Certificate No.8242

A complete hydraulic solution to provide professional test certificates for your customers

Receive a pump...



Receive the pump (or other hydraulic component) from your customer

Check on-screen values...



Run oil through the pump and display real-time hydraulic values (Flow, pressure, temperature, speed plus custom analogue measurements)

Record test data

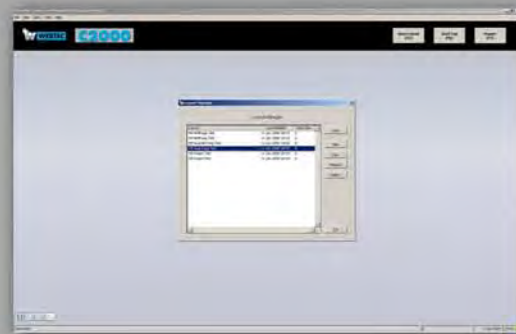


Using your own test procedure you can display real time values and record test results on a keypress

Print test certificate



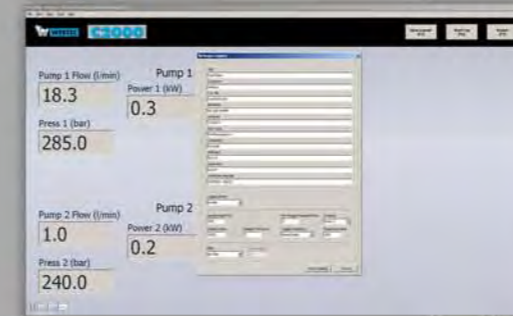
Print the test certificate at the touch of a button, ready to send back to the customer with the pump.



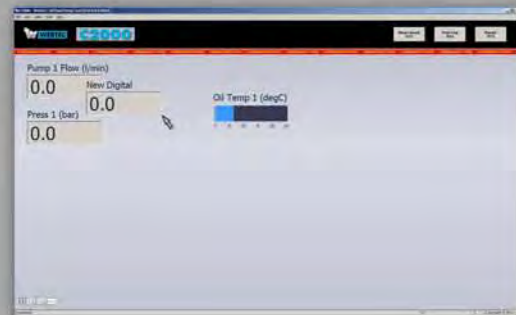
Open a previously used layout file on the C2000



Super panel (show 12 key readings)



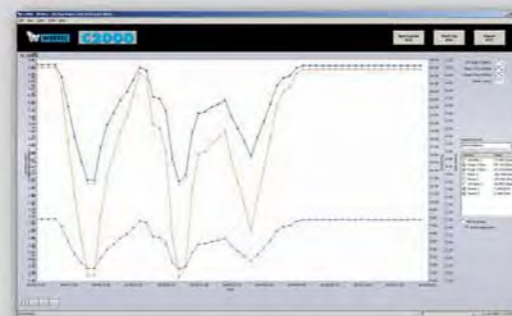
Enter customer and pump details.



If it is a new type of test, you can quickly create a new layout using the easy-to-use 'drag and drop' functionality.

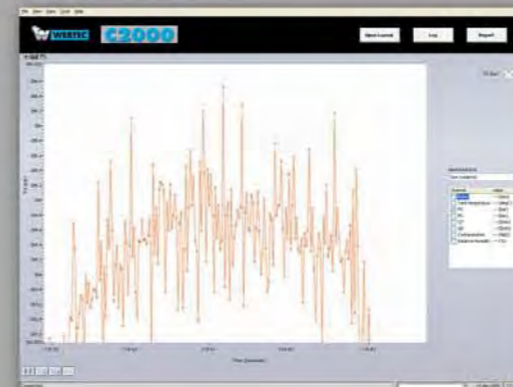


Normal panel (show all readings)



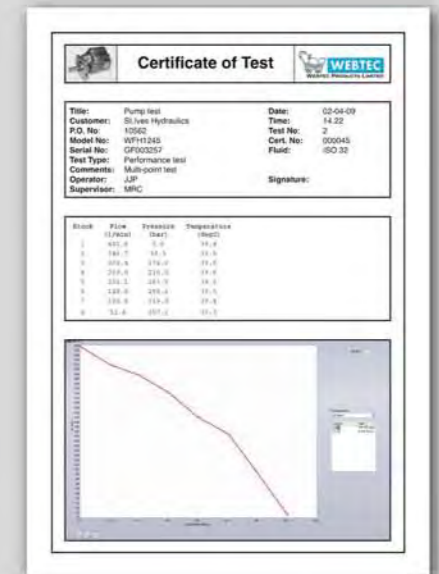
Show results graphically

Fault-finding



If you need to fault-find a problem you can carry out high-speed data-logging at the press of a button.

At speeds of up to 2000 times a second you can run a profile log (where the test is automatically triggered by an event) or a continuous log.

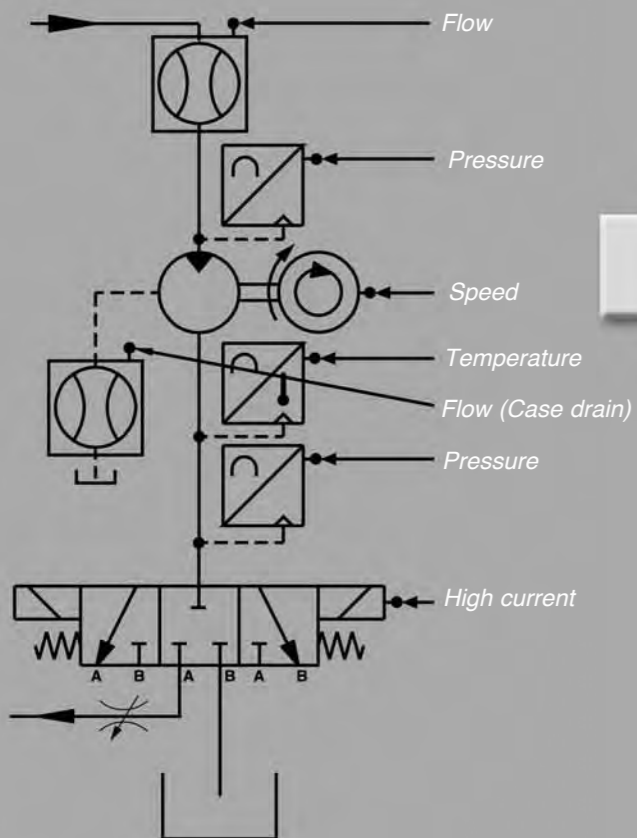


The data is saved on the C2000 and can be accessed from any other networked computer*

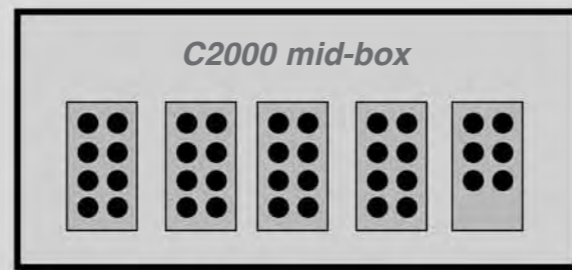
*Computer must be Windows compatible and have a licenced copy of C2000 viewing software running on it.

System architecture

Sensors...



Data acquisition...



The C2000 mid-box has a micro-processor built-in which carries out high speed data acquisition on all channels.

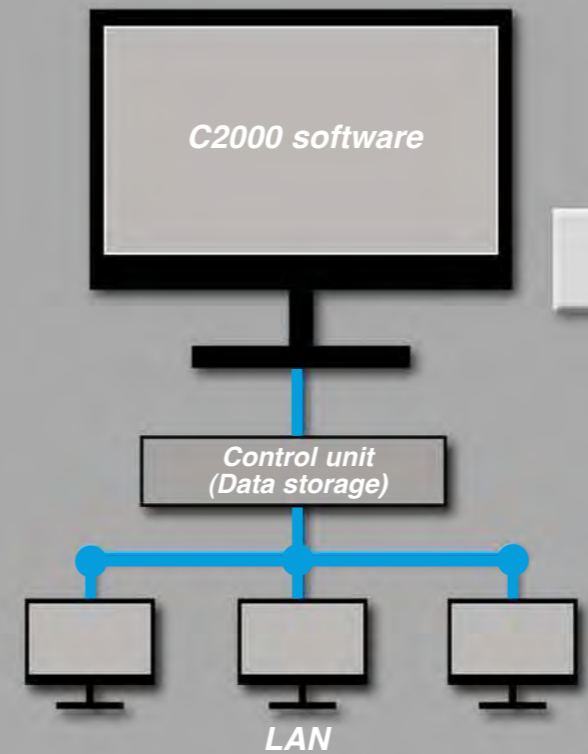
Built to suit your application in modules of 8 analogue inputs (4-20 mA) and 6 frequency inputs, the mid-box is scalable between 8 and 64 inputs.



Un-interruptible power supply

We know you can't afford for your test stand solution to be down. The UPS protects the C2000 against power surges or brief power cuts that could damage the system or cause data loss.

Data storage and display...



C2000 connects directly to your existing local area network (LAN)

Communication...

Print a paper certificate on any Windows(TM) compatible printer



Create a digital certificate (pdf)



Send data files via email (csv/xls)

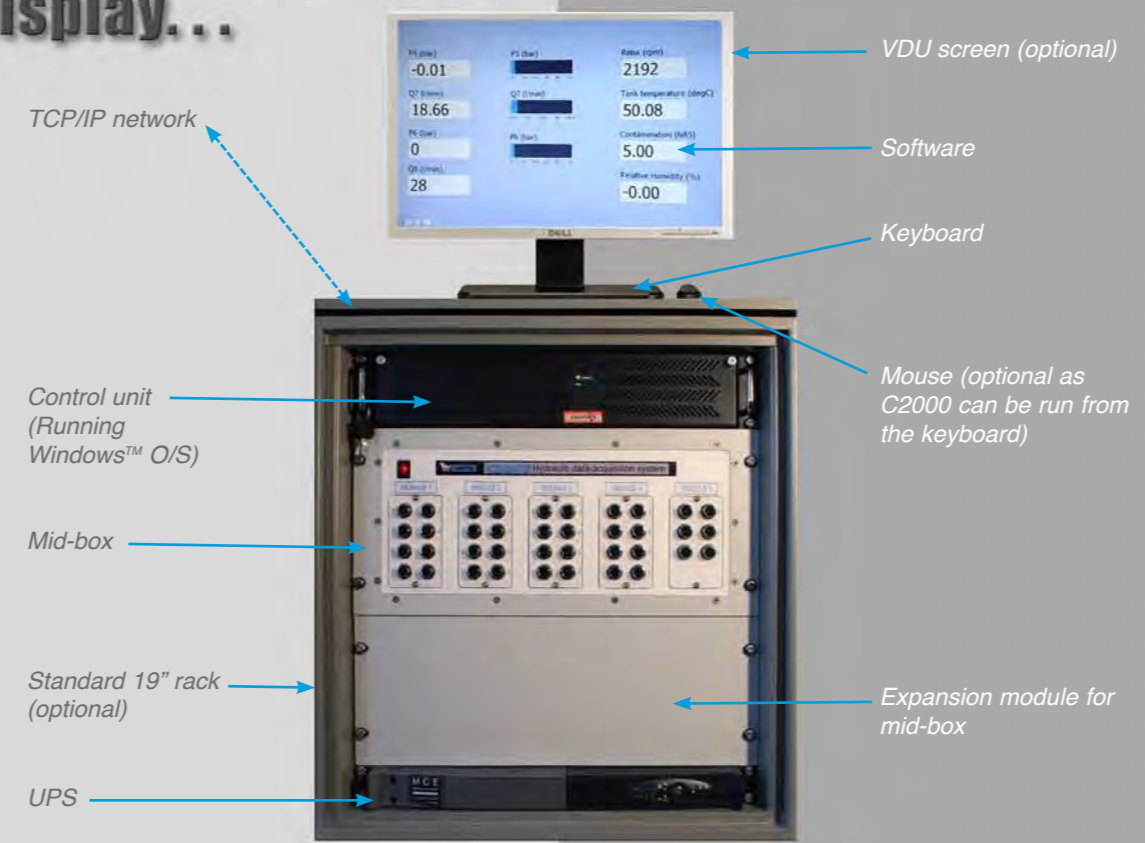


Sensors...

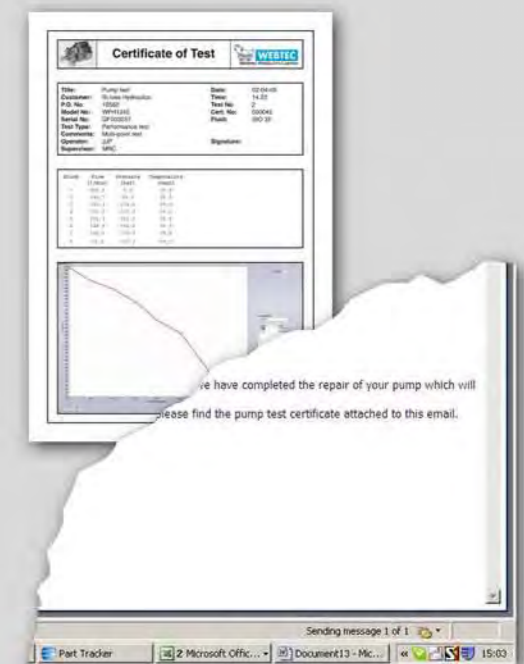


Choose from over 20 Webtec sensors and interface custom analogue inputs.

Data acquisition, storage and display...



Communication...



E-mail digital version of certificate to customer.

Hydraulic sensors

Technical specifications

CT - Conditioned turbine flow meters (4-20 mA)



Turbine flow meters with and without loading valve built-in

Model number	Scaled range (lpm)	Calibrated range (lpm)	Max. cont. pressure (bar)
CT15-MA-B-B	0 - 15	1 - 15	420
CT60-MA-B-B	0 - 60	3 - 60	420
CT150-MA-B-B	0 - 150	5 - 150	420
CT300-MA-B-B	0 - 300	8 - 300	420
CT400-MA-B-B	0 - 400	10 - 400	420
CT600-MA-B-B	0 - 600	15 - 600	350
CT800-MA-S-B	0 - 800	20 - 800	480
CT1500-MA-F-S	0 - 1500	50 - 1500	420
CT300R-MA-B-B	0 - 300	8 - 300	420
CT400R-MA-B-B	0 - 400	10 - 400	420
CT600R-MA-S-B	0 - 600	20 - 600	480
CT800R-MA-S-B	0 - 800	20 - 800	480

* Accuracy 1% IR over 15 - 100% of range. Fixed error at 15% of range and below

MPT - Pressure transducers (4-20 mA)



Model Number	Scaled Range
MPT16-##-mA	0 - 16 bar
MPT40-##-mA	0 - 40 bar
MPT100-##-mA	0 - 100 bar
MPT250-##-mA	0 - 250 bar
MPT400-##-mA	0 - 400 bar
MPT600-##-mA	0 - 600 bar

TP - Temperature probes (4-20 mA)



Model Number	Scaled Range*	Output	Pressure (bar)
TP125-mA	0 - 150 °C	4 - 20 mA	480

* Maximum Continuous Temperature 125 °C

SP - Speed sensor (TTL output)



Model Number	Output	Range
SP-TTL	TTL	1 to 2000Hz

Custom analogue inputs

Custom analogue inputs available on request. Contact sales for more information

The C2000 is a 3rd generation solution for displaying, logging and reporting hydraulic test information.

The C2000 offers the latest in data monitoring and logging capability. The super panel offers easy user configuration of up to 12 channels in either digital or slider mode.

Features:

- Up to 64 channels

Sensors available:

- Flow meters 1 to 1500 LPM
- Pressure transducers 1 to 600 bar
- Temperature transducer 0 to 125°C
- Speed sensor
- Standard 4 to 20 mA or TTL inputs for additional sensors

Three logging modes:

- Log on a keypress
- Profile logging
- Continuous logging
- Logging speed up to 2 kHz per channel
- Over 8 million readings capability

Four monitoring screens:

- Super panel
- Two standard panels
- Real time graphing
- Custom reports

Other:

- Analysis of results
- Ethernet connection
- Industrial control unit included as standard
- Optional 19" rack
- Help on line
- Export files to other packages
- Easy upgrade path for future expansion if needed

C2000 mid-box

Up to 5 modules as standard 5U height
Expansion box adds up to an additional 3 modules 4U height

Input signal type

4 to 20mA signals - analogue measurement 8 channels per module
TTL - frequency measurement - 6 channels per module

Operating conditions

Temperature range 5 to 35 Deg C
Humidity 10 to 90 RH

Rack

12U 19" open cabinet system
Overall size - 0.65m x 0.65m x 0.65m

Control unit specification

2U height
Processor 2.80GHz Core2Duo,
RAM 2GB
Hard disk 250GB
Operating system -Windows XP service pack 3

UPS

420 watt 650 VA
Time at half load 9 minutes

Sensors (see separate bulletins)

Flow meters - CT and CTR Range
Pressure transducers - MPT range
Temperature transducer - TP range
Speed transducer - SP range

Ordering Information

230 volt system FT10232 - XXX
120 Volt system FT10287 - XXX

First X - 0 for no rack, 1 for with rack
Second X - no of TTL modules - 6 channels per module
Third X - no of 4-20mA modules - 8 channels per module

Above part number contains the following:

C2000 connection box plus expansion box if needed

Control unit, including keyboard and mouse, excludes a monitor.

C2000 software disc

Uninterruptible power supply (UPS)

Customer testimonial & global support



"...it is very easy to use."

"...Visually, it's something we use a lot for our own checks. Then we record the data and we can forward the data to the customer in the form of a certificate. We can show the actual figures that we have seen on the test stand. We can go through efficiencies with the customer and it gives it a transparent feel, you know. They know that the job's been done properly and tested to the OEM standards."

Gavin Makins (MD)
G M Hydraulics Services Ltd



WEBTEC PRODUCTS LIMITED

Nuffield Road, St. Ives, Cambridgeshire, PE27 3LZ, UK
Tel: +44(0)1480 397400 Fax: +44(0)1480 466555

E-mail: sales@webtec.co.uk
See us at: www.webtec.co.uk

Webtec Products Limited reserve the right to make improvements and changes to the specification without notice.

Webtec Products Limited (UK)

Nuffield Road, St. Ives, Cambridgeshire, PE27 3LZ, UK.
Tel: +44 (0) 1480 397 400 - Fax: +44 (0) 1480 466 555
e-mail: sales@webtec.co.uk - www.webtec.co.uk

Webster Instruments (USA)

1290 E Waterford Avenue, Milwaukee, WI 53235, USA.
Tel: +1 414-769 6400 - Fax: +1 414-769 6591
e-mail: sales@webster-inst.com - www.webster-inst.com

Webster Messtechnik (Germany)

An der Palmweide 55, 44227, Dortmund, Germany.
Tel: +49 (0) 231-9759-747 - Fax: +49 (0) 231-9759-710
e-mail: sales@webtec.co.uk - www.webtec.co.uk

Webtec (France)

120 Avenue de Dunkerque, 59400 CAMBRAI, France.
Tel: +33 (0) 3 27 82 94 56 - Fax: +33 (0) 3 27 82 94 55
e-mail: ventes@webtec.fr - www.webtec.fr

See C2000 in use...

Contact sales to see a video of the C2000 in use or request a demonstration disc today featuring a full hardware & software demonstration.

Your Webtec Products representative:

