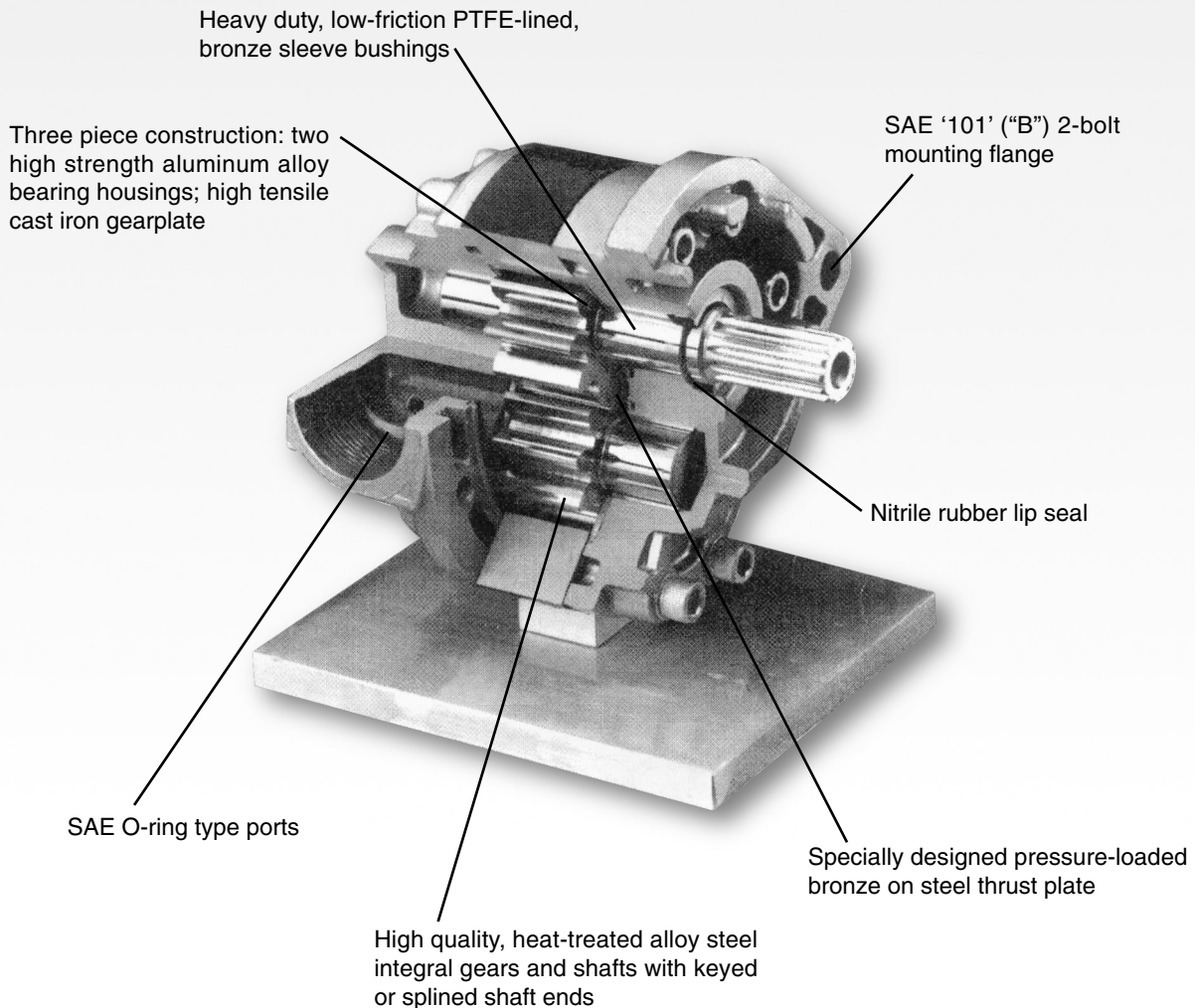


## K Series Hydraulic Pumps & Motors

K Series hydraulic pumps and motors provide the ultimate in flexibility, with numerous displacements, features and shaft/port options. The K Series has an excellent reputation for rugged, dependable performance at continuous pressures to 3000 psi

(207 bar) and speeds to 3000 rpm. K Pumps are available in nine displacements from .86 to 3.88 in<sup>3</sup>/rev (14.1 to 63.6 cm<sup>3</sup>/rev); MK motors in seven displacements from 1.29 to 3.88 in<sup>3</sup>/rev (21.1 to 63.6 cm<sup>3</sup>/rev)



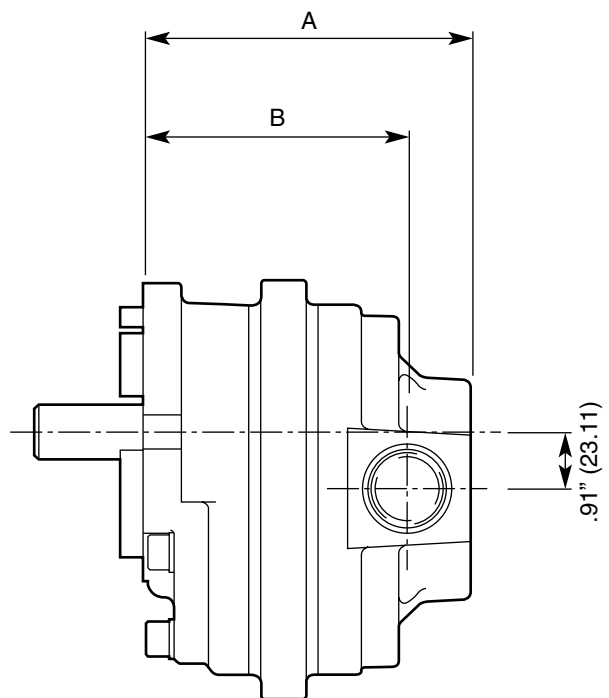
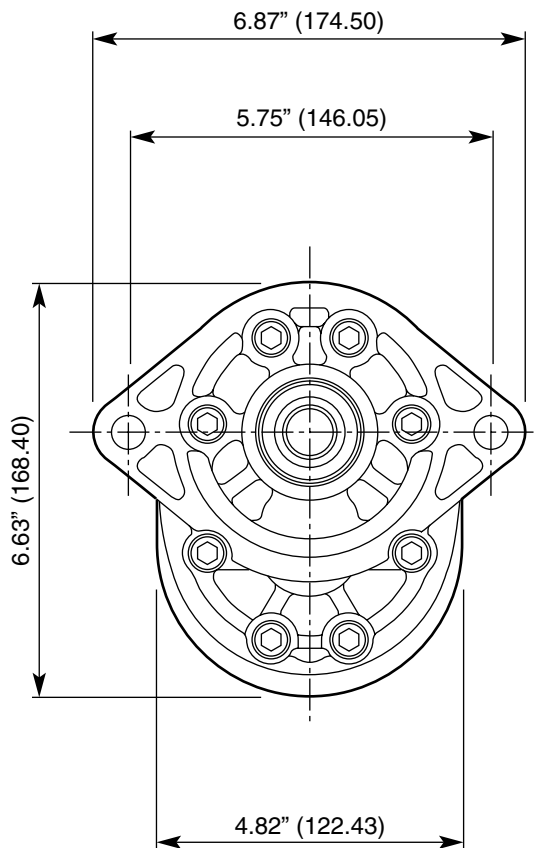
**Quality Hydraulic Components from the Webtec Range**

Pump or Motor Displacement Code	086K	108K	129K	151K	194K	237K	280K	323K	388K
Theoretical displacement in <sup>3</sup> /rev (cm <sup>3</sup> /rev)	.86 (14.09)	1.08 (17.70)	1.29 (21.14)	1.51 (24.74)	1.94 (31.79)	2.37 (38.84)	2.80 (45.88)	3.23 (52.93)	3.88 (63.59)
Pumps max. <b>continuous</b> pressure psi (bar)	3000 (207)	3000 (207)	3000 (207)	3000 (207)	3000 (207)	3000 (207)	3000 (207)	3000 (207)	2500 (172)
Motors max. <b>continuous</b> pressure psi (bar)	-	-	2500 (172)	2500 (172)	2500 (172)	2500 (172)	2500 (172)	2500 (172)	2500 (172)
Pump-maximum speed (rpm)	3000	3000	3000	3000	3000	3000	3000	3000	2750
Motor-maximum speed (rpm)	-	-	3000	3000	3000	3000	3000	3000	2750

Model Number	086K	108K	129K	151K	194K	237K	280K	323K	388K
"A" inches (mm)	4.15 (105.41)	4.25 (107.95)	4.35 (110.49)	4.45 (113.03)	4.65 (118.11)	4.85 (123.19)	5.05 (128.27)	5.25 (133.35)	5.55 (140.97)
"B" inches (mm)	3.14 (79.76)	3.24 (82.30)	3.34 (84.84)	3.44 (87.38)	3.64 (92.46)	3.84 (97.54)	4.04 (102.62)	4.24 (107.70)	4.54 (115.32)

### Dimensions

Dimensions shown in inches (mm)



## K Series Hydraulic Pumps & MK Series Hydraulic Motors

### Specifications

Pump Model	Motor Model	Displacement	
		in <sup>3</sup> /rev	(cm <sup>3</sup> /rev)
086K	-	.86	(14.09)
108K	-	1.08	(17.70)
129K	M129K	1.29	(21.14)
151K	M151K	1.51	(24.74)
194K	M194K	1.94	(31.79)
237K	M237K	2.37	(38.84)
280K	M280K	2.80	(45.88)
323K	M323K	3.23	(52.93)
388K	M388K	3.88	(63.58)

**Note:** Theoretical pump delivery in gpm (lpm) is determined by multiplying displacement-in<sup>3</sup>/rev (cm<sup>3</sup>/rev)- by desired pump rpm and dividing by 277 (1000).

---

K pumps & motors have a pressure balanced design for high volumetric and mechanical efficiencies. They feature three-piece construction with two lightweight, high strength aluminium alloy bearing housings combined with a high tensile cast iron centre gear plate. Integral gears and shafts are made of heat-treated alloy steel. Standard features include straight, keyed shafts, heavy-duty sleeve bearings, nitrile rubber lip seals and slide SAE O-ring type ports. Optional flow dividers are available with a factory preset constant delivery from 1 to 20 gpm (3.8 to 75.7 lpm) at the regulated (priority) flow port.

---

<b>Operating Pressures</b>	3000 psi (207 bar) continuous - 388K-2500 psi (172 bar) continuous (Pumps) 2500 psi (172 bar) continuous (All motors)
<b>Recommended Operating Speeds</b>	To 3000 rpm 388K to 2750 rpm (Pump and Motor)
<b>Mounting</b>	SAE 2-bolt code "101" ("B")
<b>Shafts</b>	1.00" (25.40 mm) diameter straight keyed shaft, standard. Other shafts available upon request.
<b>Shaft Rotation</b>	Clockwise Counterclockwise (When viewed from shaft end)
<b>Seals</b>	Nitrile rubber standard
<b>Bearings</b>	Heavy-duty, low-friction PTFE-lined bronze sleeve bushings
<b>Porting</b>	SAE O-ring side location, standard
<b>Weight</b>	13 - 22 pounds (5.9 - 10,0 kg)

## Order Code Analysis



<b>1</b>	<b>Application</b>
<b>Omit</b>	No letter indicates pump
<b>M</b>	Motor

<b>3</b>	<b>Series K</b>

<b>4</b>	<b>Mounting</b>
<b>B</b>	SAE 2-bolt code "101-2" (SAE "B")

<b>2</b>	<b>Displacement</b>	
<b>Displacement Code</b>	<b>Displacement in<sup>3</sup>/rev</b>	<b>Displacement (cm<sup>3</sup>/rev)</b>
086	.86	(14.09)
108	1.08	(17.70)
129	1.29	(21.14)
151	1.51	(24.74)
194	1.94	(31.79)
237	2.37	(38.84)
280	2.80	(45.88)
323	3.23	(52.93)
388	3.88	(63.58)

<b>5</b>	<b>Porting</b>
<b>1</b>	1 5/8" - 12 SAE straight thread (inlet) tank, 1 5/16" - 12 SAE straight thread (outlet) pressure - (sides)

<b>6</b>	<b>Shaft Extension</b>
<b>B</b>	1.00" (25.40 mm) dia. straight keyed shaft - 2.50" (63.5 mm) extension with .25" (6.4 mm) x 1.50" (38.1 mm) long square key

<b>7</b>	<b>Customer Variations</b>
<b>Omit</b>	No number indicates standard
<b>5</b>	High pressure shaft seal

<b>8</b>	<b>Shaft Rotation (viewed from shaft end)</b>
<b>L</b>	Left hand (Counterclockwise)
<b>R</b>	Right hand (Clockwise)



Certificate No.8242