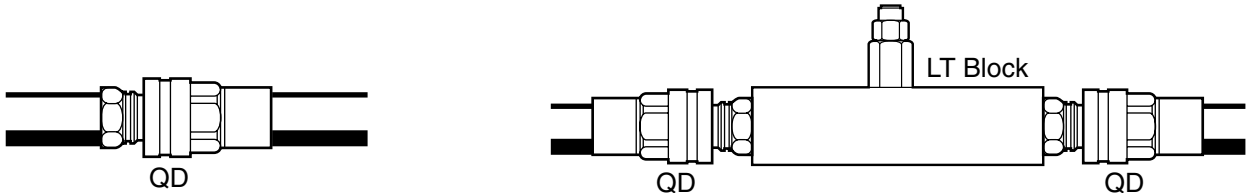


Information - Quick Installation of Turbines

Method 1

Use quick disconnect coupling on the hose after the filter etc., in the main pressure line. When you wish to test, stop the machine, disconnect and insert the turbine.



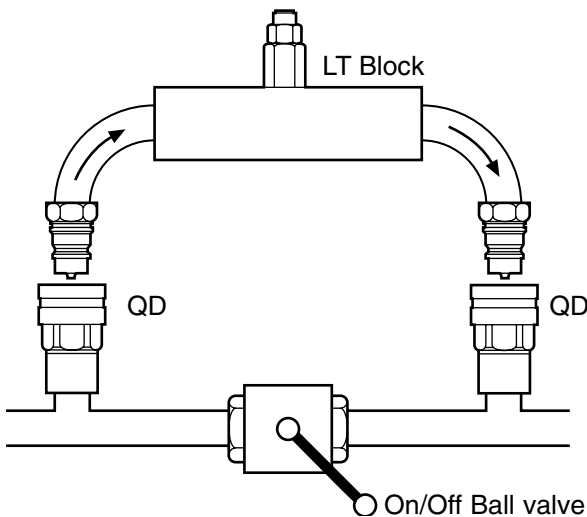
Method 2

If you do not wish to stop the machine:-

Use a 2 way ball valve to select the turbine which is connected by hoses in parallel.

Connect the turbine, then operate the ball valve.

Note: It is advisable that the quick disconnect couplers can be connected under pressure.

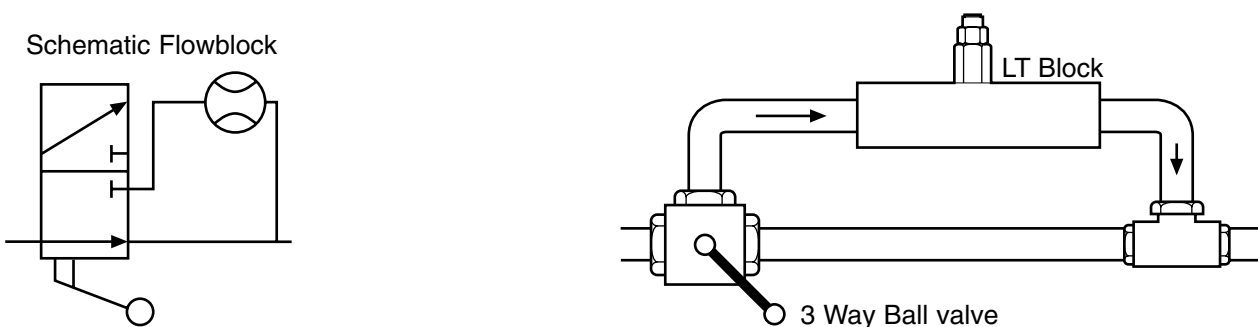


Method 3

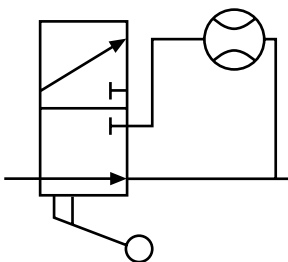
A variation of method (2) But permanent mounting.

Use a 3 way ball valve with one 'Tee'. Mount the ball valve etc., permanently.

Connect the turbine then operate the ball valve.

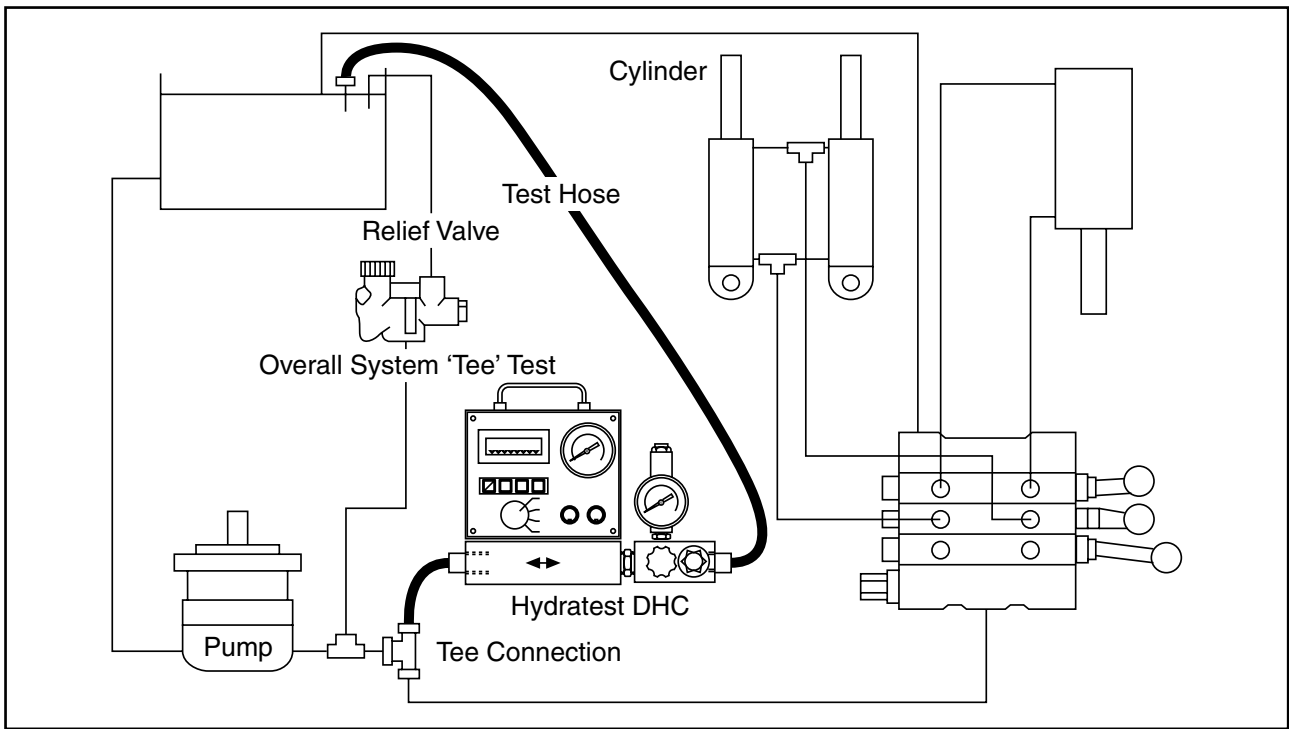


Schematic Flowblock



Note:

With method 2 & 3 tests can be made without stopping the machine.



Test B - 'TEE' Test using DHT DHC or DHCR

A 'Tee' must be installed at one point between the pump and control valve then connected to the "IN" port of the Tester. The "OUT" port of the tester is connected back to the tank. Make sure the loading valve is open.

Note: Typically an elbow may be changed to a 'Tee' in most hydraulic circuits and the 'Tee' can be capped with a steel cap when not used for testing.



WEBTEC PRODUCTS LIMITED

Nuffield Road, St. Ives, Cambridgeshire, PE27 3LZ, UK

Tel: +44(0)1480 397 400 Fax: +44(0)1480 466 555

E-mail: sales@webtec.co.uk

See us at: www.webtec.co.uk

Webtec Products Limited reserve the right to make improvements and changes to the specification without notice.