



**WEBTEC**

**WEBTEC PRODUCTS LIMITED**

**Portable Hydraulic  
Testers to suit a variety  
of applications**



**Another quality product from  
the Webster range**

**FIK Series Pump Testers**

# High pressure, low cost, no mess. . .

**An easy to use range of portable testers for field and workshop testing of hydraulic pumps.**

The Webster range of testers have been designed to meet the needs of engineers in the diagnostic testing of hydraulic systems; they are the result of over 35 years experience in the fluid power industry.

Webster testers can simultaneously read flow, pressure and temperature.

**Unique benefits include:**

- Loading valve for quick simulation of machine operating loads.
- Built-in INTERPASS protection against pressure overload.

All Webster testers are individually calibrated on test stands and all calibrations are traceable to National Standards.

Models are available to meet individual testing requirements. Innovative design and attention to detail ensures a technically advanced and high quality product.

**Benefits of Testing.**

The Webster hydraulic tester enables you to quickly test the pump to check the cause of low machine performance. The problem could be internal leakage in the pump or a partly blocked suction strainer.

Measuring only the pressure means you can correctly set each valve and ensure that the machine is not being over-loaded. However, you will need a flow meter to identify the suspect component.

Using a Webster tester you can quickly test a machine to identify a problem, thus eliminating guesswork. After completion of the repair you can easily re-test the machine.

The loading valve allows you to simulate the working conditions while in the workshop, making it far easier to run a test as you don't need to operate all the machine's functions.

**Webster testers reduce down-time and save on labour. . .**

**. . .engineered to make testing of hydraulic machinery fast and convenient.**

*A typical application where a Webster tester would save you downtime*



The FIK series of mechanical flow indicator test kits require no batteries or external power. Their simple compact design allows simultaneous measurement of all three basic parameters: flow, pressure and temperature.

**Built-in thermometer**

Heat stressed hydraulic fluids can be a major factor in component failure. The thermometer, calibrated for both °C and °F is a carefully designed and integrated part of a high quality unit, not a bolted-on afterthought.

**Easy-to-read dial**

The large 63mm dial display has a robust, impact resistant plastic window and is fully sealed.

**Dual scale**

The dial has a dual scale calibrated in both lpm and gpm (Imperial)

**Easy Connection**

The FIK can be connected "In Line" between the pump and valve for convenient machine testing.

**Accurate & Repeatable**

All units are individually checked on test stands traceable to British and International standards and display flow accurate to better than 4% FSD.

**Rugged case**

Manufactured in high quality steel and coated in a tough paint finish, the FIK can withstand the most rigorous of use out in the field.

**Analogue Pressure Gauge**

Our pressure gauges are Glycerine filled for fast reliable reading on fluctuating pressures. When simulating machine loading, you see not only the pressure but how the pressure is changing.

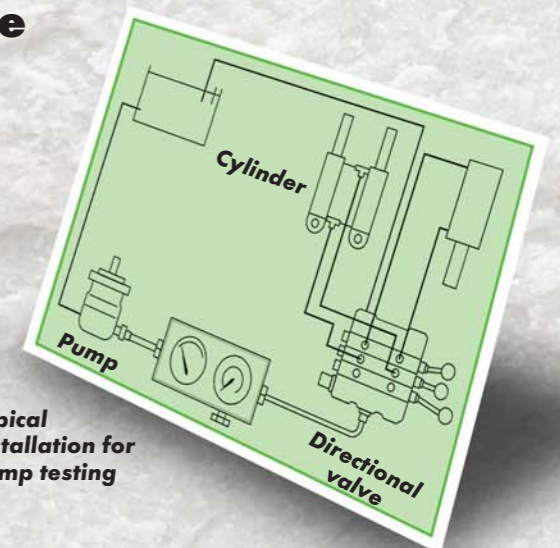
When setting a relief valve, you can easily see the cracking pressure by watching for the sudden reduction in flow.

**Unique "INTERPASS" Protection**

Safety discs are built into the load valve. In the event of excess pressure in the hydraulic circuit, the discs rupture and oil is internally bypassed back to the tank, a feature unique to Webster Testers. "INTERPASS" protects the environment and most importantly YOU from external oil spillage.

**Loading Valve**

A loading valve allows you to simulate pressure on the hydraulic system without the need to operate all the machine functions in the workshop. The multi-stage valve design assures low handle effort and smooth operation over the entire flow and pressure range.



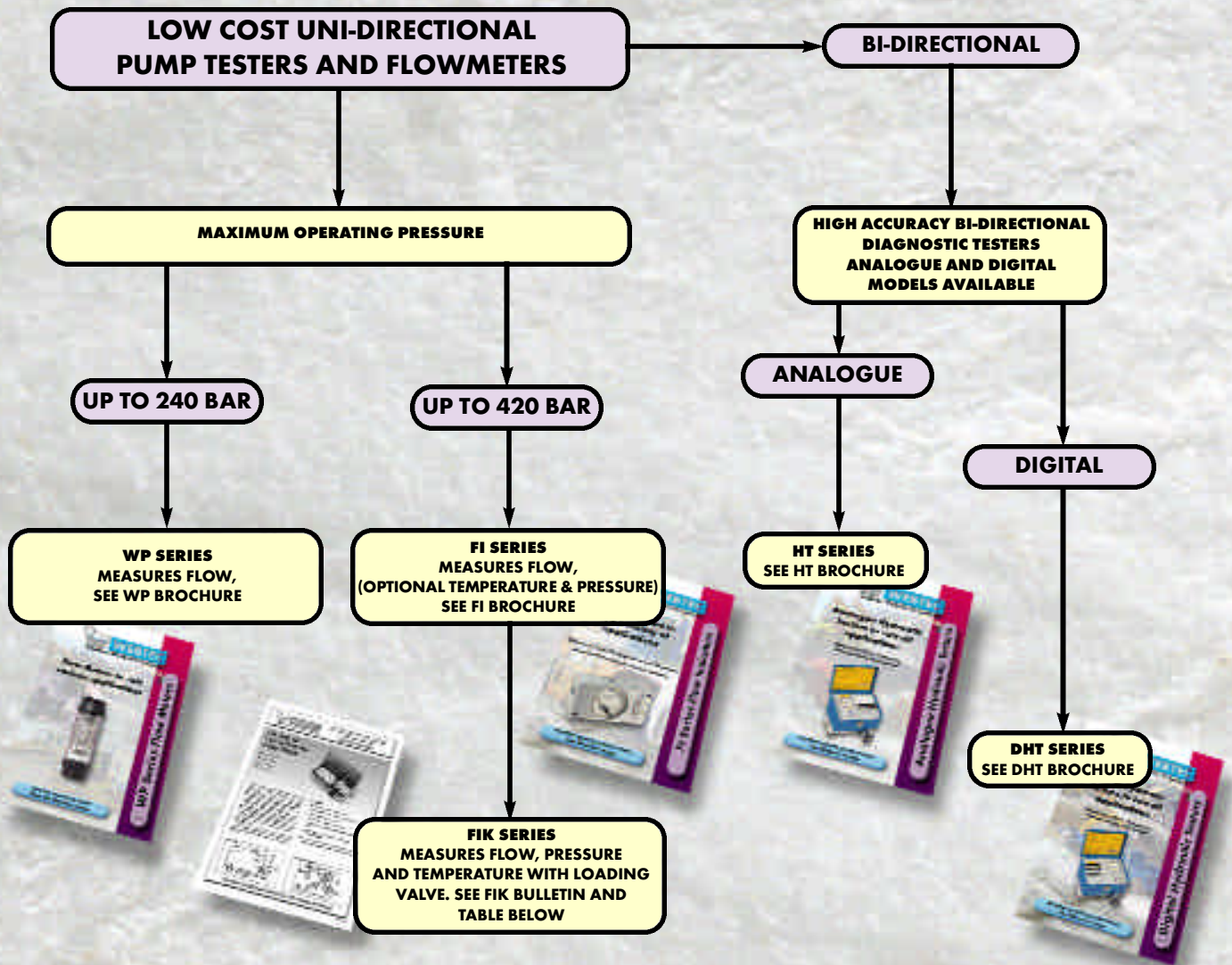
*Typical installation for pump testing*

**. . .for mobile and industrial pump testing**



# FIK SERIES PUMP TESTERS

## Product Selector



Flow and Pressure Ranges

Model Number	Flow range (lpm)	Pressure (bar)
FIK 30 ABOT	2 - 30	420
FIK 60 ABOT	2 - 60	420
FIK 120 ABOT	4 - 120	420
FIK 180 ABOT	10 - 180	420



### FIK Pump Testers

- Measures flow, pressure and temperature
- Built-in loading valve with INTERPASS™ protection
- Rugged compact design
- All mechanical, no batteries required

Your Webtec Products representative:



# WEBTEC

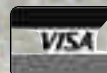
WEBTEC PRODUCTS LIMITED

Nuffield Road, St. Ives, Cambridgeshire, PE27 3LZ, UK  
Tel: +44(0)1480 397400 Fax: +44(0)1480 466555

E-mail: [sales@webtec.co.uk](mailto:sales@webtec.co.uk)  
See us at: [www.webtec.co.uk](http://www.webtec.co.uk)



Certificate No. 8242



Webtec Products Limited reserve the right to make improvements and changes to the specification without notice.