



# WEBTEC

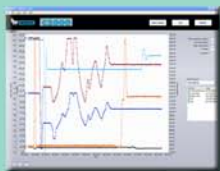
WEBTEC PRODUCTS LIMITED

## Inside this issue

The best things come in three's



The all new FlowHUB, the 'complete flow monitoring solution'



The C2000, our 3rd generation pump test-stand data acquisition system



The DHCR1500R hydraulic test kit for testing LARGE construction machinery

During April and May, Webtec will be launching these three new products. To help you get the chance to see them, we will be exhibiting at three shows:



Hannover Messe, Hannover, Germany,  
April 20-24th, Hall 21, Stand B07-3



Intermat, Paris, France,  
April 20 - 25th, Hall 6, Stand H004



SED, Rockingham show ground, UK, May  
12-14th, Pavilion, Stand 30P

We look forward to seeing you at one of these shows.  
If you aren't able to visit us, please contact us on  
[sales@webtec.co.uk](mailto:sales@webtec.co.uk) or tel: 01480 397400  
to request further information

Webtec Spring 2009 Update

Issue  
7

# FLOW HUB

## The complete flow monitoring solution Measure - Display - Switch - Transmit

Webtec will be launching the latest hydraulic flow monitoring solution, called the FlowHUB, at the Hannover Fair 2009. Aimed at hydraulic system designers and maintenance engineers, the compact FlowHUB can replace up to six components in a hydraulic system. Applications are diverse and include condition monitoring, component testing and closed-loop machine control.

This brand new product can measure, display, switch and transmit flow readings in a fluid power or lubrication circuit as well as measure and display temperature. Three years of development has led to the FlowHUB using a unique sensing technology (Patent pending) designed to both minimise energy loss through pressure drop and ensure excellent resolution even for heavy-duty applications.

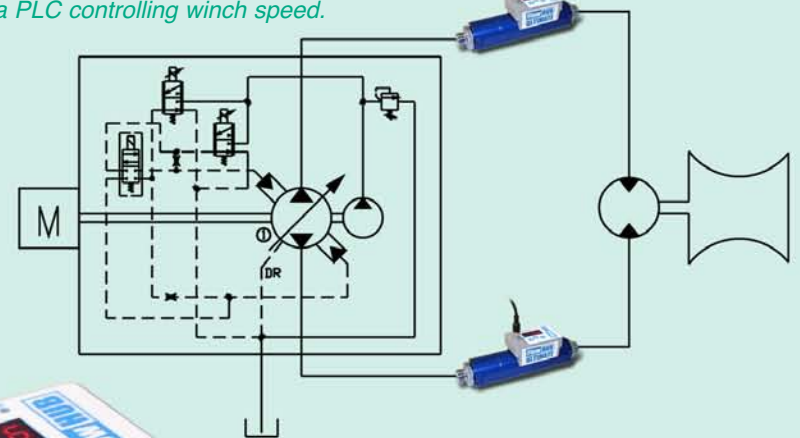
At launch, there will be 80 models of the FlowHUB covering 5 flow ranges

up to 360 lpm and rated at either 210 or 420 bar. Each flow size will be available in three standard versions: 'Switch', 'Transmitter' and 'Ultimate' as well as the opportunity (volume permitting) to specify Custom / OEM versions which can be engineered to meet the requirements of special applications.

For further information please visit Webtec in Hall 21, Stand B07-3 at the Hannover exhibition. The product is available to order from May 2009.



A typical closed loop control application using the FlowHUB Ultimate to feed signals back to a PLC controlling winch speed.



See us at



20 - 24 April 2009 Hannover, Germany  
Hall 21, Stand B07-3

# C2000

## The tailored data-acquisition system for hydraulic test stands

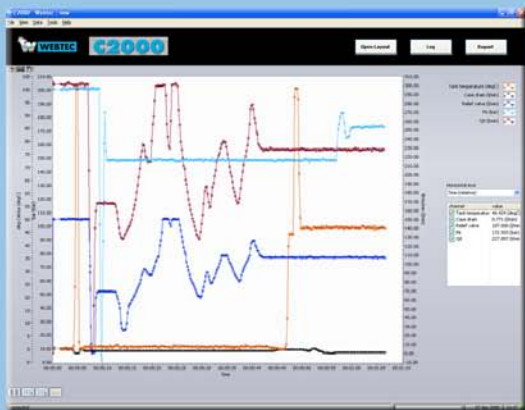
Webtec will be showing the 3rd generation C2000 at the Hannover exhibition in April. This turn-key system comprises: hydraulic sensors, data acquisition hardware, C2000 software and training.

Aimed primarily at hydraulic pump repair and rebuild companies the C2000 is a complete instrumentation, display, logging, storage and reporting

solution tailored to the needs of the client. The system interface runs on Microsoft Windows (TM) and allows the test stand operator to produce a test certificate at the touch of a button while ensuring full ISO9000 traceability on test.

The C2000 is a robust production solution that substantially simplifies the testing and certification process. The C2000 is designed to be networked, which allows a supervisor to access test files from a different computer for e-mailing to customers or printing additional reports. The solution is fully scaleable with up to 64 inputs and includes sensors to measure all hydraulic parameters such as flow, pressure, temperature, speed, contamination and torque.

For a free demonstration DVD, please contact: [sales@webtec.co.uk](mailto:sales@webtec.co.uk) or visit Webtec in Hall 21, Stand B07-3 at the Hannover exhibition. The C2000 is available to order from June 2009.

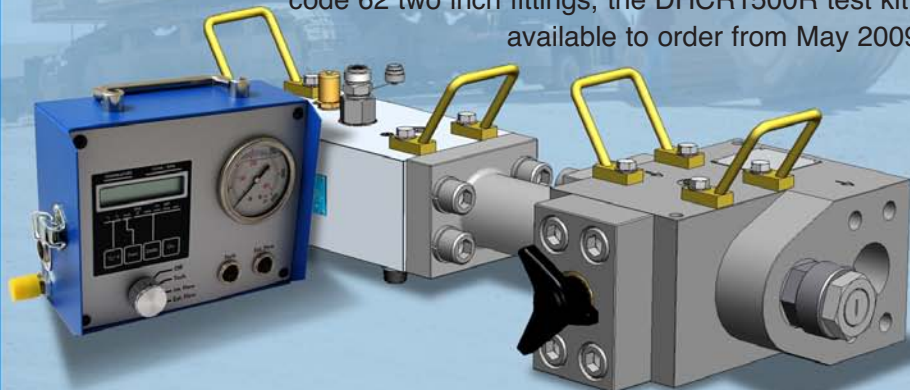


# Hydraulic testing of large construction machinery

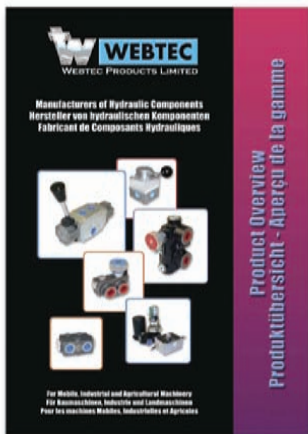
Webtec will be unveiling the DHCR1500R test kit at the InterMat and SED exhibitions, a test solution designed for testing the very largest mobile machinery with a maximum theoretical power of over 1MW.

The test kit, designed in collaboration with a major US mobile machinery manufacturer, enables the operator to measure flow, pressure and temperature while simultaneously loading the system using the purpose built pressure loading valve. The HV1500 is designed to allow the operator to simulate the machine circuit under normal conditions by restricting the flow and, hence, increasing the pump's operating pressure. Despite the large flows and pressures involved the valve can be operated with one hand and can be used to increase the load smoothly. The valve, like all Webtec HV series load valves, features a built-in burst disc safety mechanism to prevent over-pressurisation that could otherwise damage the test kit and circuit under test. Rated to a maximum of 1500 lpm and 420 bar with code 62 two inch fittings, the DHCR1500R test kit is available to order from May 2009.

**See us at**  
**INTERMAT**  
20 - 25 April 2009 Paris, France  
Hall 6, Stand H004  
and also at  
**SED 2009**  
MAY 12, 13 & 14  
THE NATIONAL EVENT FOR CONSTRUCTION  
12 - 14 May 2009 Rockingham, England  
Stand 30P in the Pavilion.



# Fax back



*Request your  
free copy of the  
Webtec  
hydraulic  
components  
overview  
today...*

*Yes please*

I would like to receive e-shots: (e-mail).....



## WEBTEC

WEBTEC PRODUCTS LIMITED

Nuffield Road, St. Ives, Cambridgeshire, PE27 3LZ, UK

Tel: +44(0)1480 397400

Fax: +44(0)1480 466555



email: [sales@webtec.co.uk](mailto:sales@webtec.co.uk)  
See us at: [www.webtec.co.uk](http://www.webtec.co.uk)



Webtec Products Limited reserve the right to make improvements and changes to the specification without notice.